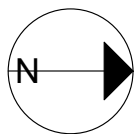


902 ST. CHARLES STREET



MAIN FLOOR
1845 SQ.FT

| | FINISHED SQ. FT. | UNFINISHED SQ. FT. | TOTAL SQ. FT. |
|--------|------------------|--------------------|---------------|
| MAIN | 1845 | 0 | 1845 |
| UPPER | 964 | 0 | 964 |
| TOTAL | 2809 | 0 | 2809 |
| GARAGE | 0 | 438 | 438 |
| PATIOS | 0 | 571 | 571 |



PREPARED FOR THE EXCLUSIVE USE OF
LESLEE FARRELL, ASSOCIATE BROKER,
MACDONALD REALTY Ltd.

MEASURED ON:
02/23/16 & 05/09/17 & 10/10/17
DRAWING FILE: 15067fm

Tafe Measure VICTORIA, B.C.
Ph. 883.8894
www.tafemeasure.com