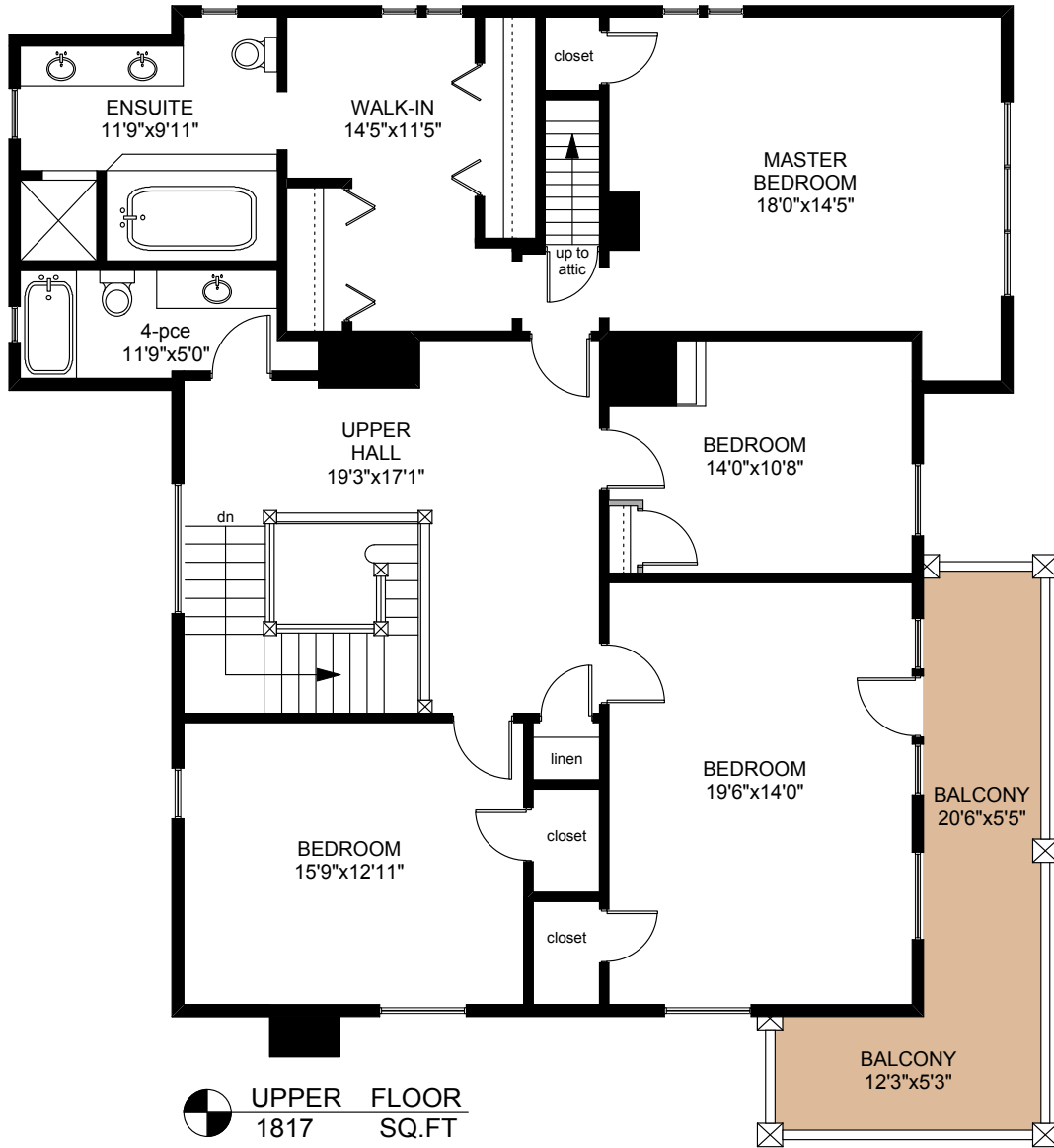
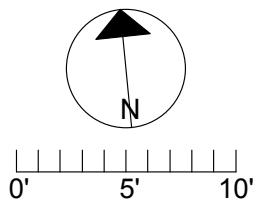


2098 WINDSOR ROAD



	FINISHED SQ. FT.	UNFINISHED SQ. FT.	TOTAL SQ. FT.
MAIN	1985	0	1985
UPPER	1817	0	1817
BASEMENT	0	1300	1300
TOTAL	3802	1300	5102
GARAGE	0	315	315
PORCH	0	791	791
BALCONY	0	175	175



PREPARED FOR THE EXCLUSIVE USE OF
 LESLEE FARRELL, ASSOCIATE BROKER,
 MACDONALD REALTY Ltd.
 &
 DONNA CURTIS OF REALTII VICTORIA

MEASURED ON: 07/26/16
 DRAWING FILE: 13807fm

Tafmeasure VICTORIA, B.C.
 Ph. 883.8894
 www.tafemeasure.com