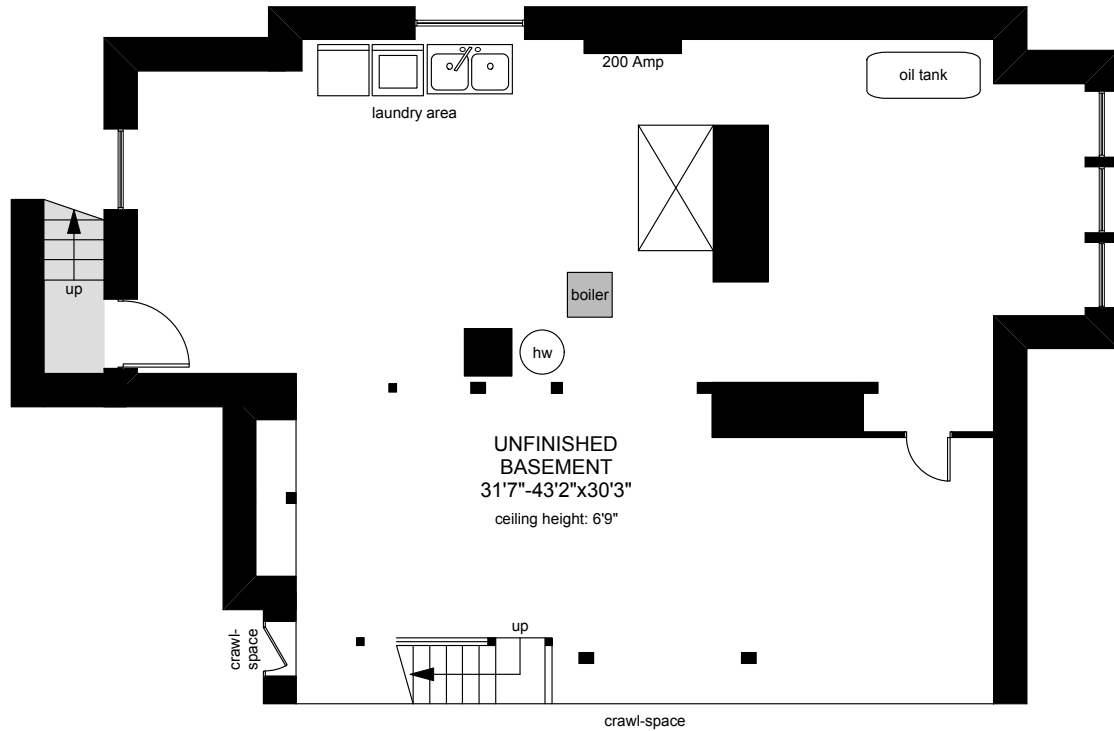

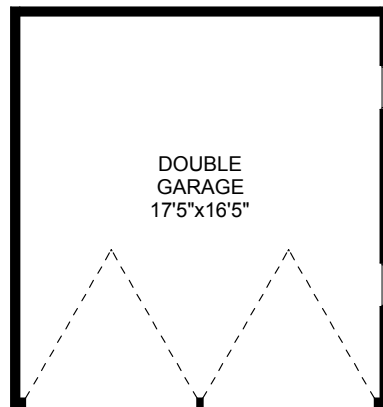


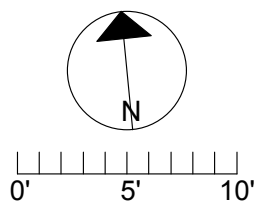
# 2098 WINDSOR ROAD



 **BASEMENT**  
1300 SQ.FT



	FINISHED SQ. FT.	UNFINISHED SQ. FT.	TOTAL SQ. FT.
MAIN	1985	0	1985
UPPER	1817	0	1817
BASEMENT	0	1300	1300
<b>TOTAL</b>	<b>3802</b>	<b>1300</b>	<b>5102</b>
GARAGE	0	315	315
PORCH	0	791	791
BALCONY	0	175	175



PREPARED FOR THE EXCLUSIVE USE OF  
LESLIE FARRELL, ASSOCIATE BROKER,  
MACDONALD REALTY Ltd.  
&  
DONNA CURTIS OF REALTII VICTORIA

MEASURED ON: 07/26/16  
DRAWING FILE: 13807fm

**Taf** Measure VICTORIA, B.C.  
Ph. 883.8894  
www.tafemeasure.com